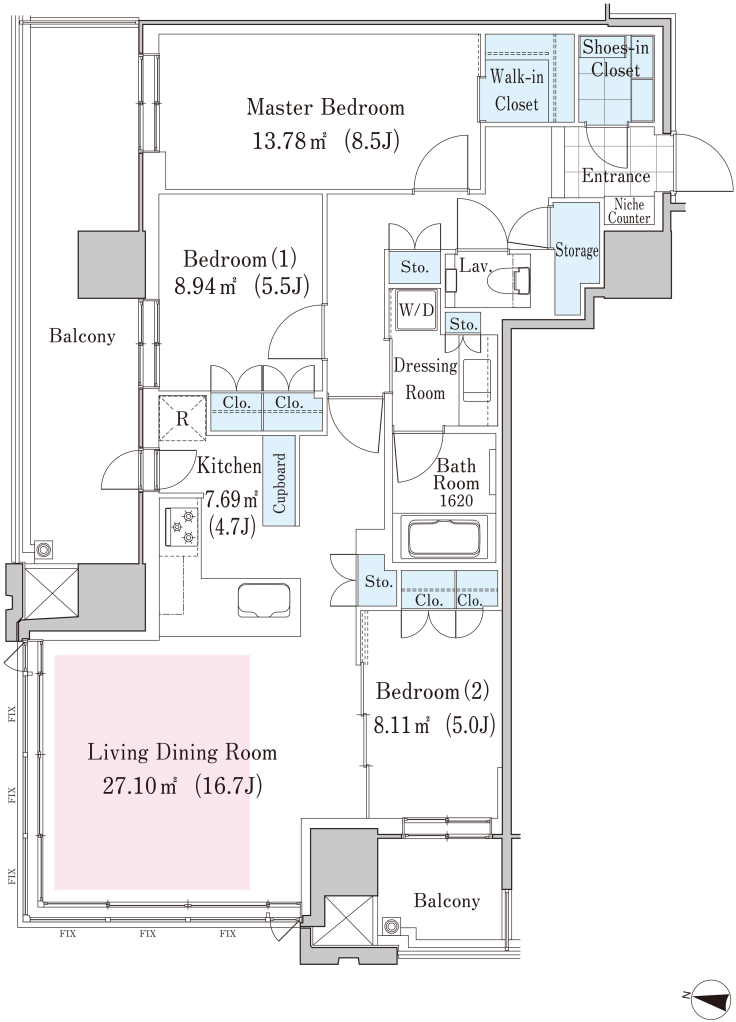
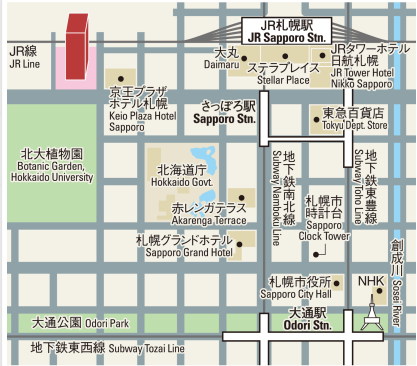


La Tour SAPPORO ITO GARDEN Apartment No. 901 (9F)

Update Date : 2025/9/6 Next scheduled update date: Anytime

Layout(Type)	3LDK(A)	Area	94.29㎡ (1014.5604 sq. ft.)
Rent	¥ 408,000	Public maintenance fee Administration cost	included in rent
Deposit Key money	2 Months • None	Renewal fee	None
Transaction type (Year)	Periodic Tenancy Contract (2 Years)	Status	Move in possible now (After paperwork)
Note	24-hour concierge service with a hotel quality Easy access from only 8-minute walk from JR " Sapporo " station Environment which enables to enjoy nature of Hokkaido University Botanic Garden •This property is only for residential purposes, except the SOHO		
Equipments	Please contact us if there is any question.		
Completed	February,2019		
Constructing	•Concrete-steel, 30 stories above ground and 1 basement level, 2 stories penthouse		
Location	8-1-1, Kita 5 Jo Nishi, Chuo-ku, Sapporo-shi, Hokkaido (Parcel number)		
Trains	8 minute-walk from Sapporo Station (JR) 8 minute-walk from Sapporo Station (Nanboku Line • Toho Line, Sapporo M unicipal Subway)		



- 1 Lease guarantee agreement: required (by a guarantee company designated by us)
Guarantee fee: 30% of lease for the first year, 8,000 yen/year for the second and subsequent years
Fees may vary depending on the guarantee company - contact us for more details.
- 2 All rentals are on a first-come-first-served basis.
- 3 Multi-risk home insurance is mandatory.
- 4 Deposits equivalent to one month of rent are non-refundable at the end of the contract.
- 5 If the contract is terminated in less than one year, a penalty equivalent to one-month rent will be applied.
- 6 When disparities arise between the drawing and the actual construction, the actual construction takes precedence.

Sumitomo Realty & Development Co., Ltd.
Shinjuku NS Building, 2-4-1, Nishi-Shinjuku Shinjuku-ku, Tokyo 163-0820 Japan
Phone: +81-3-3346-9510

Phone: 0120-770-507
for Real estate company: +81-3-3346-9510
Please contact us if there is any question.