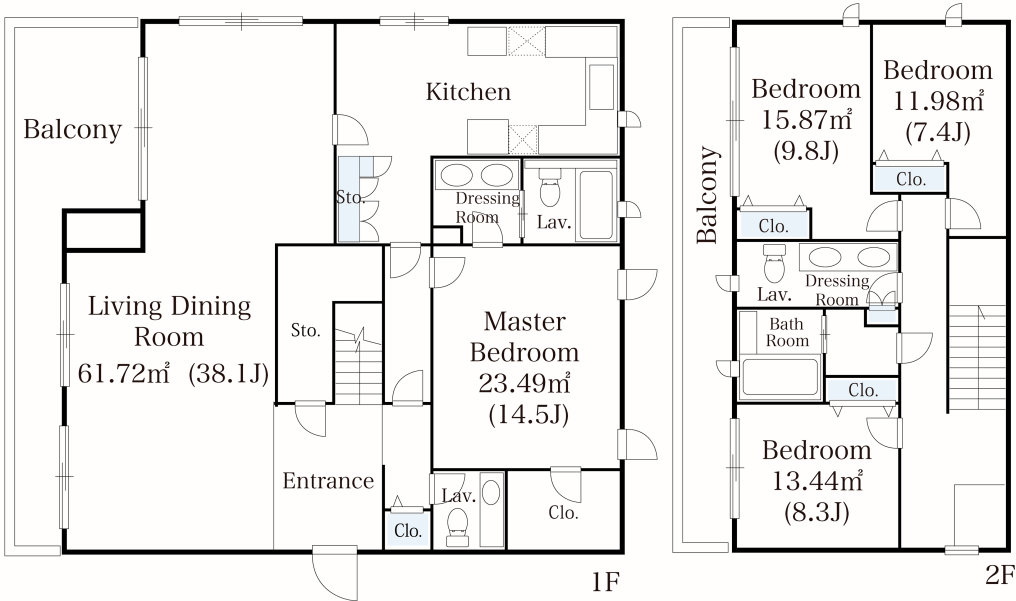


# Cortile Komaba Apartment No. 1101 (1F)

Update Date : 2025/9/6 Next scheduled update date: Anytime

Layout(Type)	4LDK(1101)	Area	243.40㎡ (2618.984 sq. ft.)
Rent	¥ 1,950,000	Public maintenance fee Administration cost	included in rent
Deposit Key money	2 Months • None	Renewal fee	None
Transaction type (Year)	Periodic Tenancy Contract (2 Years)	Status	Vacancy soon (Moving out: 10/2025)
Note	•This property is only for residential purposes, except the SOHO		
Equipments	Please contact us if there is any question.		
Completed	February,2001		
Constructing	・ Steel-frame, reinforced concrete ・ 3 stories		
Location	4-4-13 Komaba, Meguro-ku, Tokyo		
Trains	Komaba-todaimae Stn., Inokashira Line (4-min. walk) Ikenoue Stn., Inokashira Line (14-min. walk) Yoyogiuehara Stn., Chiyoda Line (16-min. walk)		



- 1 Lease guarantee agreement: required (by a guarantee company designated by us)  
Guarantee fee: 30% of lease for the first year, 8,000 yen/year for the second and subsequent years  
Fees may vary depending on the guarantee company - contact us for more details.
- 2 All rentals are on a first-come-first-served basis.
- 3 Multi-risk home insurance is mandatory.
- 4 Deposits equivalent to one month of rent are non-refundable at the end of the contract.
- 5 If the contract is terminated in less than one year, a penalty equivalent to one-month rent will be applied.
- 6 When disparities arise between the drawing and the actual construction, the actual construction takes precedence.

Sumitomo Realty & Development Co., Ltd.  
Shinjuku NS Building, 2-4-1, Nishi-Shinjuku Shinjuku-ku, Tokyo 163-0820 Japan  
Phone: +81-3-3346-9510

Phone: 0120-770-507  
for Real estate company: +81-3-3346-9510  
Please contact us if there is any question.