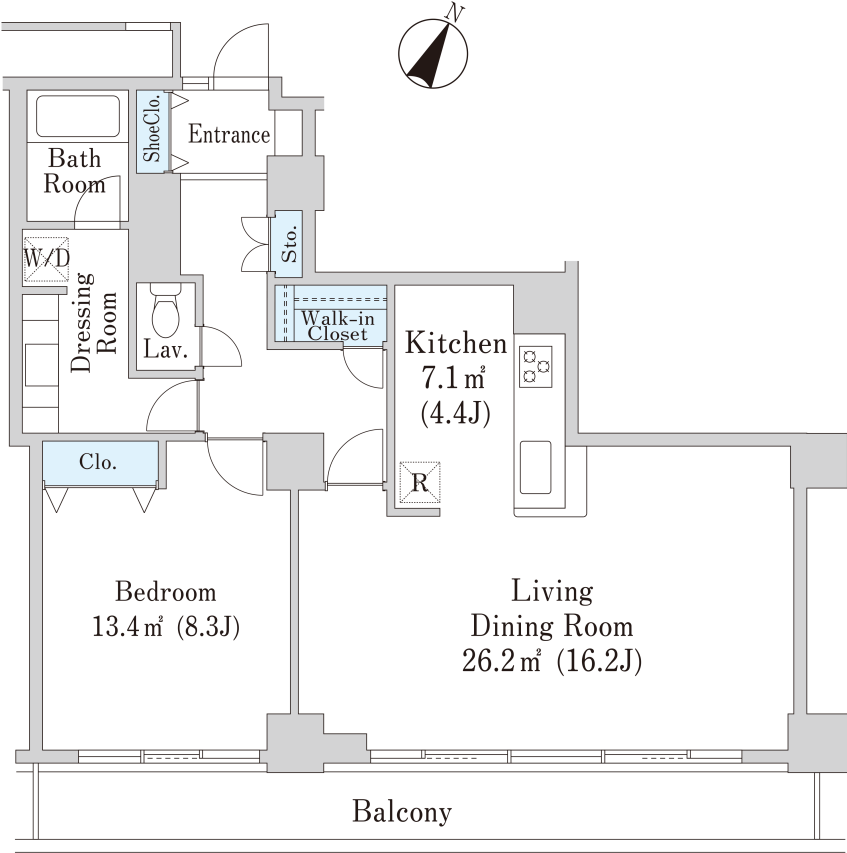


# Bay-court Shibaura Apartment No. 192 (19F)

Update Date : 2024/5/8 Next scheduled update date: Anytime

Layout(Type)	1LDK(J-R1)	Area	75.20㎡ (809.152 sq. ft.)
Rent	¥ 399,000	Public maintenance fee Administration cost	included in rent
Deposit Key money	2 Months • None	Renewal fee	None
Transaction type (Year)	Periodic Tenancy Contract (2 Years)	Status	Move in possible now (After paperwork)
Note	1 month rent will be deducted at the time of move-out.  •This property is only for residential purposes, except the SOHO		
Equipments	Please contact us if there is any question.		
Completed	September,1991		
Constructing	・ Steel-frame, reinforced concrete ・ 23 stories		
Location	3-5-25 Shibaura,Minato-ku,Tokyo		
Trains	Mita Stn., Asakusa/Toei Mita Lines (7-min. walk) Tamachi Stn., JR Line (6-min. walk)		

## Campaign On



- 1 Lease guarantee agreement: required (by a guarantee company designated by us)  
Guarantee fee: 30% of lease for the first year, 8,000 yen/year for the second and subsequent years  
Fees may vary depending on the guarantee company - contact us for more details.
- 2 All rentals are on a first-come-first-served basis.
- 3 Multi-risk home insurance is mandatory.
- 4 Deposits equivalent to one month of rent are non-refundable at the end of the contract.
- 5 If the contract is terminated in less than one year, a penalty equivalent to one-month rent will be applied.
- 6 When disparities arise between the drawing and the actual construction, the actual construction takes precedence.

Sumitomo Realty & Development Co., Ltd.  
Shinjuku NS Building, 2-4-1, Nishi-Shinjuku Shinjuku-ku, Tokyo 163-0820 Japan  
Phone: +81-3-3346-9510

Phone: 0120-770-507  
for Real estate company: +81-3-3346-9510  
Please contact us if there is any question.