

Bay-court Shibaura Apartment No. 134 (13F)

Update Date : 2025/7/4 Next scheduled update date: Anytime

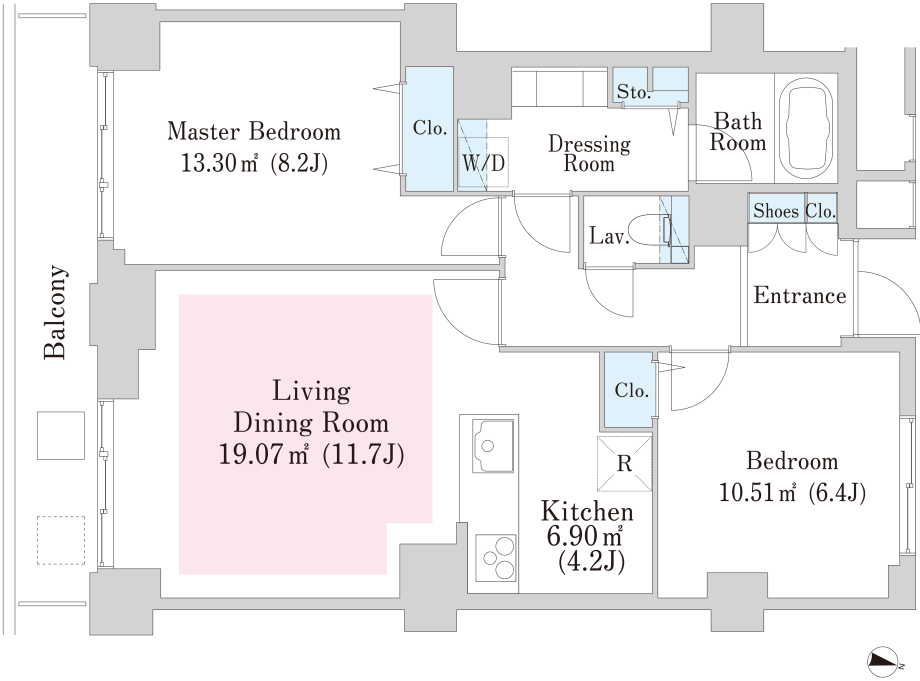
Layout(Type)	2LDK(D-R3)	Area	70.36㎡ (757.0736 sq. ft.)
Rent	¥ 475,000	Public maintenance fee Administration cost	included in rent
Deposit Key money	2 Months ・ None	Renewal fee	None
Transaction type (Year)	Periodic Tenancy Contract (2 Years)	Status	Move in possible now (After paperwork)
Note	1 month rent will be deducted at the time of move-out.		
	•This property is only for residential purposes, except the SOHO		
Equipments	Please contact us if there is any question.		
Completed	September,1991		
Constructing	・ Steel-frame, reinforced concrete ・ 23 stories		
Location	3-5-25 Shibaura,Minato-ku,Tokyo		
Trains	Mita Stn., Asakusa/Toei Mita Lines (7-min. walk) Tamachi Stn., JR Line (6-min. walk)		

The map shows the property location (red square) at 3-5-25 Shibaura, Minato-ku, Tokyo. It is situated near Mita Station (Mita Line) and Tamachi Station (JR Line). The map also shows the location of Keio University, Sakurada Dori Avenue, and several hotels and landmarks in the area.

Campaign On



*If the promotion is applicable, cancellation in less than 13 months will incur a 1-month penalty fee.
If not, cancellation in less than 1 year will incur a 1-month penalty fee.



- 1 Lease guarantee agreement: required (by a guarantee company designated by us)
Guarantee fee: 30% of lease for the first year, 8,000 yen/year for the second and subsequent years
Fees may vary depending on the guarantee company - contact us for more details.
- 2 All rentals are on a first-come-first-served basis.
- 3 Multi-risk home insurance is mandatory.
- 4 Deposits equivalent to one month of rent are non-refundable at the end of the contract.
- 5 If the contract is terminated in less than one year, a penalty equivalent to one-month rent will be applied.
- 6 When disparities arise between the drawing and the actual construction, the actual construction takes precedence.

Sumitomo Realty & Development Co., Ltd.
Shinjuku NS Building, 2-4-1, Nishi-Shinjuku Shinjuku-ku, Tokyo 163-0820 Japan
Phone: +81-3-3346-9510

Phone: 0120-770-507
for Real estate company: +81-3-3346-9510
Please contact us if there is any question.