

Bay-court Shibaura Apartment No. 24 (2F)

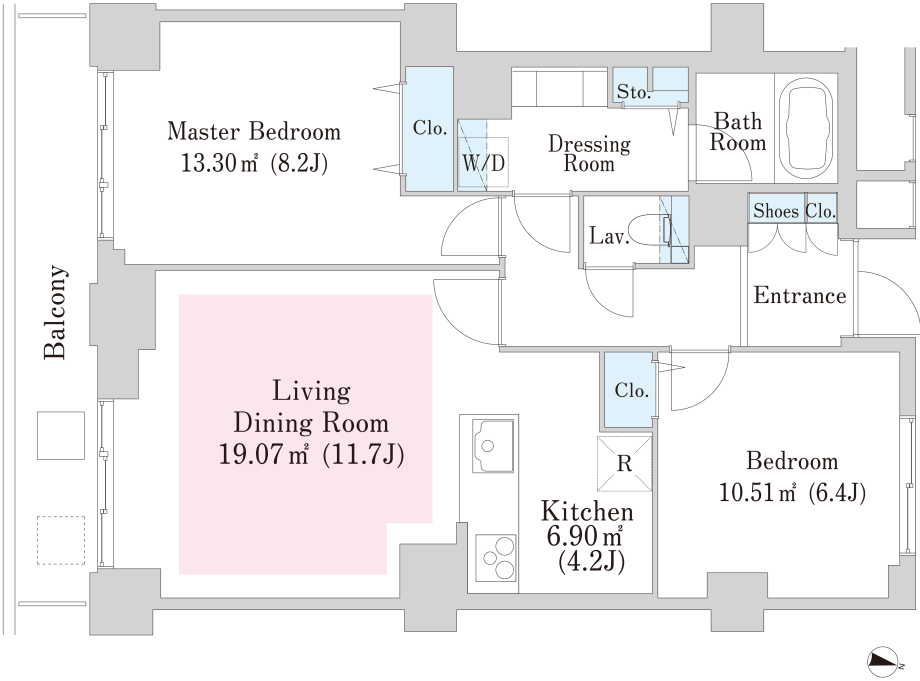
Update Date : 2025/9/6 Next scheduled update date: Anytime

Layout(Type)	2LDK(D-R3)	Area	70.36㎡ (757.0736 sq. ft.)
Rent	¥ 449,000	Public maintenance fee Administration cost	included in rent
Deposit Key money	2 Months ・ None	Renewal fee	None
Transaction type (Year)	Periodic Tenancy Contract (2 Years)	Status	Move in possible now (After paperwork)
Note	1 month rent will be deducted at the time of move-out.		
	•This property is only for residential purposes, except the SOHO		
Equipments	Please contact us if there is any question.		
Completed	September,1991		
Constructing	・ Steel-frame, reinforced concrete ・ 23 stories		
Location	3-5-25 Shibaura,Minato-ku,Tokyo		
Trains	Mita Stn., Asakusa/Toei Mita Lines (7-min. walk) Tamachi Stn., JR Line (6-min. walk)		

Campaign On



*If the promotion is applicable, cancellation in less than 13 months will incur a 1-month penalty fee.
If not, cancellation in less than 1 year will incur a 1-month penalty fee.



- 1 Lease guarantee agreement: required (by a guarantee company designated by us)
Guarantee fee: 30% of lease for the first year, 8,000 yen/year for the second and subsequent years
Fees may vary depending on the guarantee company - contact us for more details.
- 2 All rentals are on a first-come-first-served basis.
- 3 Multi-risk home insurance is mandatory.
- 4 Deposits equivalent to one month of rent are non-refundable at the end of the contract.
- 5 If the contract is terminated in less than one year, a penalty equivalent to one-month rent will be applied.
- 6 When disparities arise between the drawing and the actual construction, the actual construction takes precedence.

Sumitomo Realty & Development Co., Ltd.
Shinjuku NS Building, 2-4-1, Nishi-Shinjuku Shinjuku-ku, Tokyo 163-0820 Japan
Phone: +81-3-3346-9510

Phone: 0120-770-507
for Real estate company: +81-3-3346-9510
Please contact us if there is any question.