

La Tour SHINJUKU ANNEX Apartment No. 901 (9F)

Update Date : 2024/5/4 Next scheduled update date: Anytime

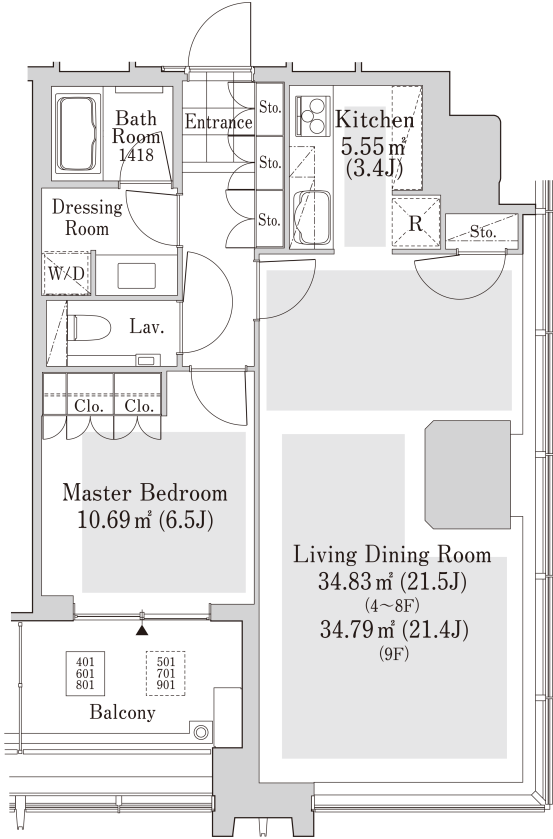
Layout(Type)	1LDK(70-A)	Area	69.52㎡ (748.0352 sq. ft.)
Rent	¥ 422,000	Public maintenance fee Administration cost	included in rent
Deposit Key money	2 Months • None	Renewal fee	None
Transaction type (Year)	Periodic Tenancy Contract (3 Years)	Status	Move in possible now (After paperwork)
Note	<p>24-hour concierge service with a hotel quality Easy access of only 16-minute walk to JR " Shinjuku " station Residential unit equipped with built-in appliances (kitchen with a dishwasher and a garbage disposal unit; steam sauna, bath floor heating and dehumidifier; ceiling-mounted air conditioner) In front of the Central Park Tower La Tour Shinjuku, there is a free shuttle bus to JR Shinjuku station.</p> <p>•This property is only for residential purposes, except the SOHO</p>		
Equipments	Please contact us if there is any question.		
Completed	August,2019		
Constructing	•Steel framed construction (Steel Reinforced Concrete, Reinforced Concrete[a part of the whole]) •33 stories above ground and 2 basement levels (apartments for rent on floors 4-9)		
Location	6-18-1 Nishi-shinjuku, Shinjuku-ku, Tokyo		
Trains	Tochomae Stn., Oedo Line (8-min. walk) Nishi-Shinjuku-5chome Stn., Oedo Line (7-min. walk) Nishi-Shinjuku Stn., Marunouchi Line (9-min. walk) Shinjuku Stn., JR Line (16-min. walk)		



Campaign On



*If the promotion is applicable, cancellation in less than 13 months will incur a 1-month penalty fee.
If not, cancellation in less than 1 year will incur a 1-month penalty fee.



- Lease guarantee agreement: required (by a guarantee company designated by us)
Guarantee fee: 30% of lease for the first year, 8,000 yen/year for the second and subsequent years
Fees may vary depending on the guarantee company - contact us for more details.
- All rentals are on a first-come-first-served basis.
- Multi-risk home insurance is mandatory.
- Deposits equivalent to one month of rent are non-refundable at the end of the contract.
- If the contract is terminated in less than one year, a penalty equivalent to one-month rent will be applied.
- When disparities arise between the drawing and the actual construction, the actual construction takes precedence.

Sumitomo Realty & Development Co., Ltd.
Shinjuku NS Building, 2-4-1, Nishi-Shinjuku Shinjuku-ku, Tokyo 163-0820 Japan
Phone: +81-3-3346-9510

Phone: 0120-770-507
for Real estate company: +81-3-3346-9510
Please contact us if there is any question.