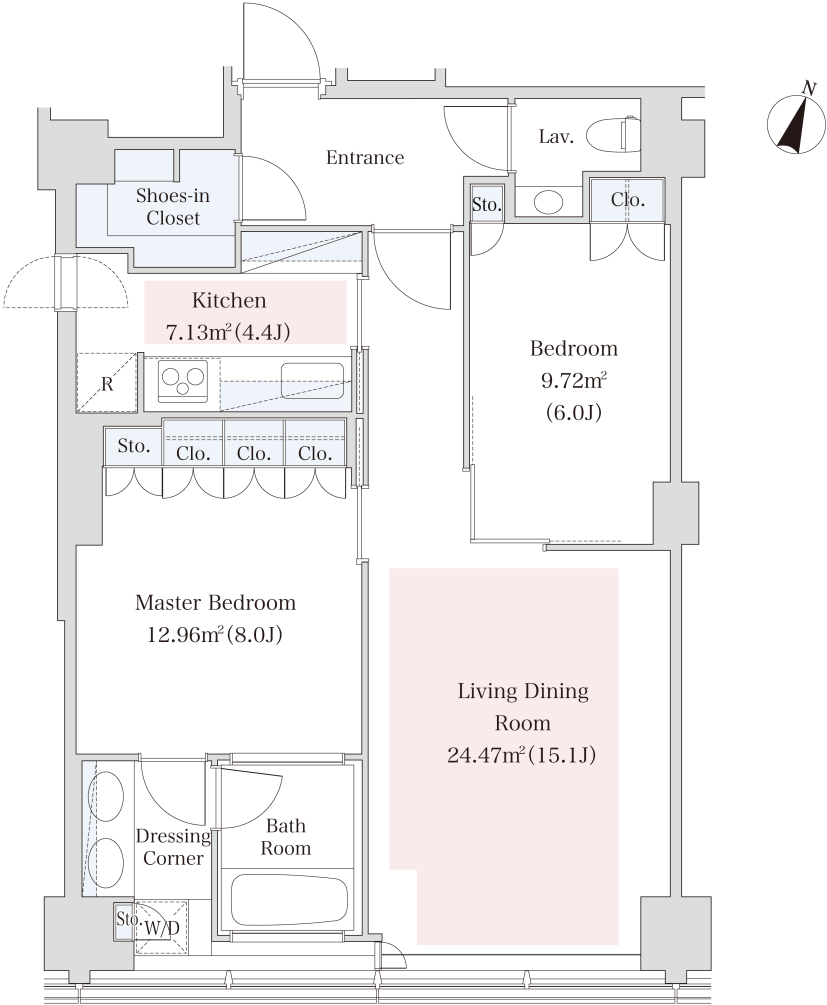


La Tour Aobadai Apartment No. 3007 (30F)

Update Date : 2025/12/18 Next scheduled update date: Anytime

Layout(Type)	2LDK(K)	Area	78.18㎡ (841.2168 sq. ft.)
Rent	¥ 828,000	Public maintenance fee Administration cost	included in rent
Deposit Key money	2 Months • None	Renewal fee	None
Transaction type (Year)	Periodic Tenancy Contract (2 Years)	Status	Vacancy soon (Moving out: 01/2026)
Note	Fitness lounge on 21nd floor Color Variation(White Chic/Stylish Brown) 1 month rent will be deducted at the time of move-out. •This property is only for residential purposes, except the SOHO		
Equipments	Please contact us if there is any question.		
Completed	August,2009		
Constructing	• Steel-frame, reinforced concrete • Anti-seismic res ponse control • 33 stories		
Location	3-6-28 Aobadai, Meguro-ku, Tokyo		
Trains	Ikejiri-Ohasi Stn., Denentoshi Line (7- min. walk) Shinsen Stn., Inokashira Line (9-min. w alk) Shibuya Stn., JR Line (16-min. walk)		



- 1 Lease guarantee agreement: required (by a guarantee company designated by us)
Guarantee fee: 30% of lease for the first year, 8,000 yen/year for the second and subsequent years
Fees may vary depending on the guarantee company - contact us for more details.
- 2 All rentals are on a first-come-first-served basis.
- 3 Multi-risk home insurance is mandatory.
- 4 Deposits equivalent to one month of rent are non-refundable at the end of the contract.
- 5 If the contract is terminated in less than one year, a penalty equivalent to one-month rent will be applied.
- 6 When disparities arise between the drawing and the actual construction, the actual construction takes precedence.

Sumitomo Realty & Development Co., Ltd.
Shinjuku NS Building, 2-4-1, Nishi-Shinjuku Shinjuku-ku, Tokyo 163-0820 Japan
Phone: +81-3-3346-9510

Phone: 0120-770-507
for Real estate company: +81-3-3346-9510
Please contact us if there is any question.