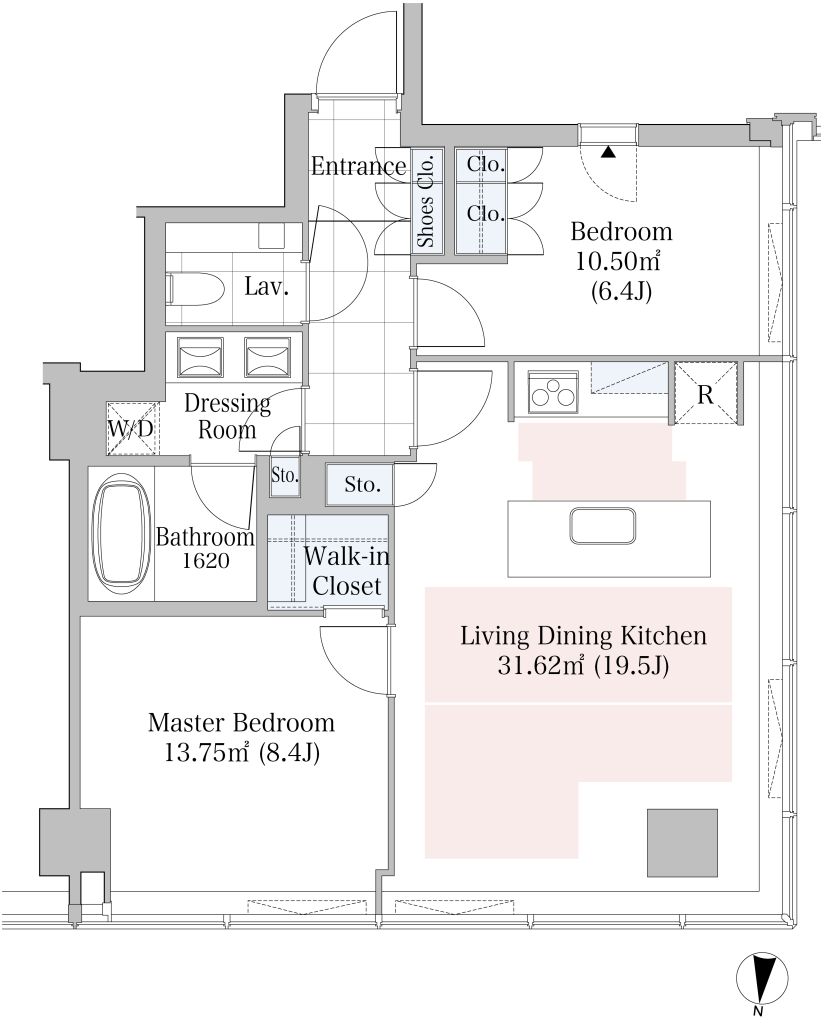


# La Tour Shibuya Apartment No. 1401 (14F)

Update Date : 2025/7/5 Next scheduled update date: Anytime

Layout(Type)	2LDK(A1)	Area	76.23㎡ (820.2348 sq. ft.)
Rent	¥ 790,000	Public maintenance fee Administration cost	included in rent
Deposit Key money	2 Months • None	Renewal fee	None
Transaction type (Year)	Periodic Tenancy Contract (2 Years)	Status	Vacancy soon (Moving out: 08/2025)
Note	<div>25story high-rise apartments</div> <div>8-min. walk to Shibuya Stn.,11-min. walk to Omote-sando Stn</div> <div>24-hour Concierge</div> <div>24-hour Security</div> <div>1 month rent will be deducted at the time of move-out.</div> <div>•This property is only for residential purposes, except the SOHO</div>		
Equipments	Please contact us if there is any question.		
Completed	August,2010		
Constructing	• Reinforced concrete structure, partially steel frame structure, • steel frame reinforced concrete structure • anti-sway structure • 25 floors above ground, 3 floors below ground, 2 floors pent house		
Location	2-20 Higashi 1-chome, Shibuya-ku, Tokyo		
Trains	Shibuya Stn., JR Line (8-min. walk) Omote-sando Stn., Ginza/Chiyoda Lines (11-min. walk)		



- 1 Lease guarantee agreement: required (by a guarantee company designated by us)  
Guarantee fee: 30% of lease for the first year, 8,000 yen/year for the second and subsequent years  
Fees may vary depending on the guarantee company - contact us for more details.
- 2 All rentals are on a first-come-first-served basis.
- 3 Multi-risk home insurance is mandatory.
- 4 Deposits equivalent to one month of rent are non-refundable at the end of the contract.
- 5 If the contract is terminated in less than one year, a penalty equivalent to one-month rent will be applied.
- 6 When disparities arise between the drawing and the actual construction, the actual construction takes precedence.

Sumitomo Realty & Development Co., Ltd.  
Shinjuku NS Building, 2-4-1, Nishi-Shinjuku Shinjuku-ku, Tokyo 163-0820 Japan  
Phone: +81-3-3346-9510

Phone: 0120-770-507  
for Real estate company: +81-3-3346-9510  
Please contact us if there is any question.