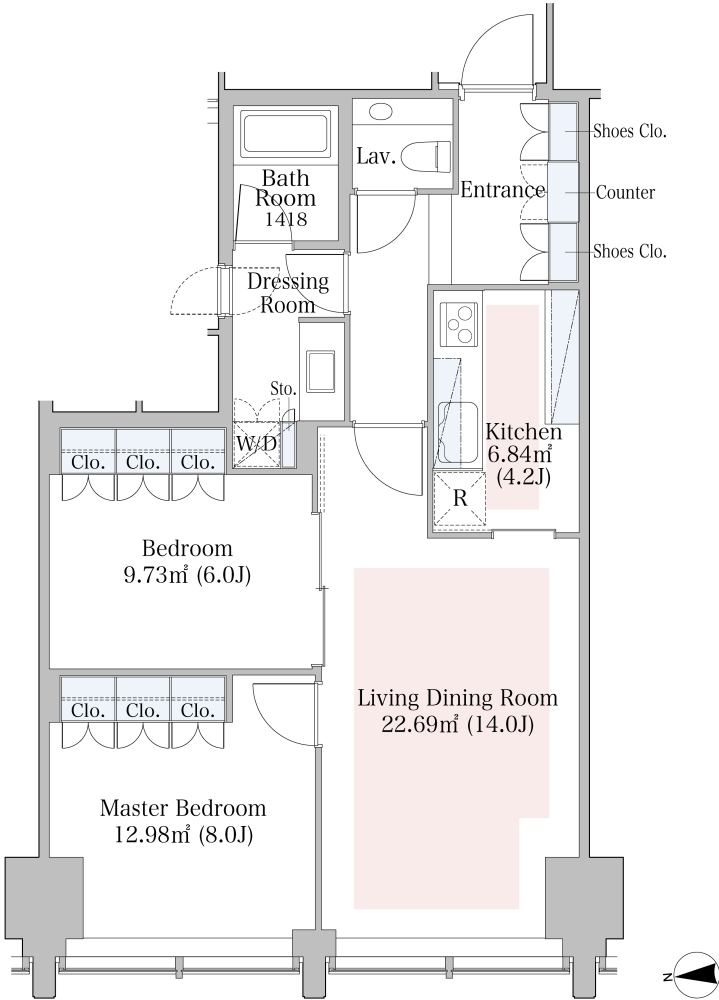


La Tour Iidabashi Apartment No. 1505 (15F)

Update Date : 2025/6/14 Next scheduled update date: Anytime

| | | | |
|----------------------------|---|---|---|
| Layout(Type) | 2LDK(H) | Area | 73.80㎡ (794.088 sq. ft.) |
| Rent | ¥ 558,000 | Public maintenance fee Administration cost | included in rent |
| Deposit Key money | 2 Months • None | Renewal fee | None |
| Transaction type (Year) | Periodic Tenancy Contract (3 Years) | Status | Move in possible now (After paperwork) |
| Note | 24-hour Concierge Sky garden, Party room 1 month rent will be deducted at the time of move-out. •This property is only for residential purposes, except the SOHO | | |
| Equipments | Please contact us if there is any question. | | |
| Completed | April,2010 | | |
| Constructing | • Steel-frame, partial steel-frame reinforced concrete • Anti-sway structure • 34 stories | | |
| Location | 2-6-1Koraku,Bunkyo-ku,Tokyo | | |
| Trains | Iidabashi Stn., Oedo Line (4-min. walk) Iidabashi Stn., JR/Tozai/Yurakucho/Na mboku Lines (6-min. walk) Korakuen Stn., Marunouchi/Namboku Lines (9-min. walk) | | |



- 1 Lease guarantee agreement: required (by a guarantee company designated by us)
Guarantee fee: 30% of lease for the first year, 8,000 yen/year for the second and subsequent years
Fees may vary depending on the guarantee company - contact us for more details.
- 2 All rentals are on a first-come-first-served basis.
- 3 Multi-risk home insurance is mandatory.
- 4 Deposits equivalent to one month of rent are non-refundable at the end of the contract.
- 5 If the contract is terminated in less than one year, a penalty equivalent to one-month rent will be applied.
- 6 When disparities arise between the drawing and the actual construction, the actual construction takes precedence.

Sumitomo Realty & Development Co., Ltd.
Shinjuku NS Building, 2-4-1, Nishi-Shinjuku Shinjuku-ku, Tokyo 163-0820 Japan
Phone: +81-3-3346-9510

Phone: 0120-770-507
for Real estate company: +81-3-3346-9510
Please contact us if there is any question.