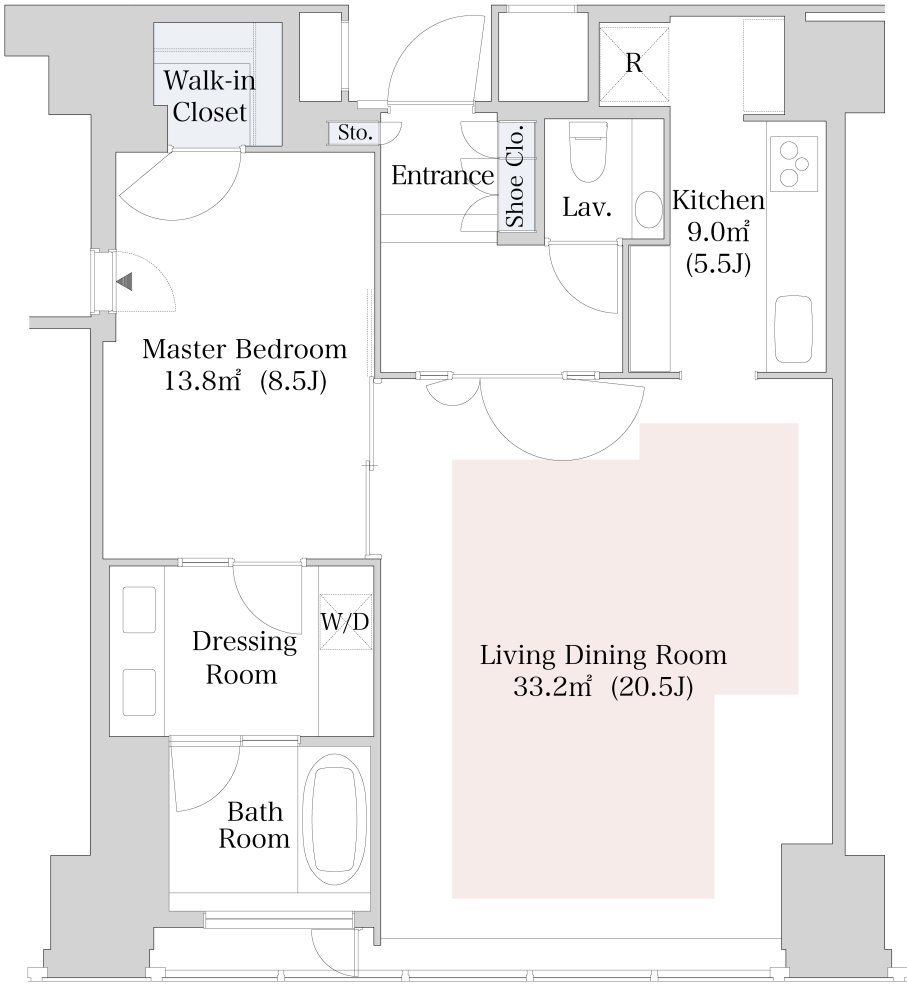


# CENTRAL PARK TOWER La Tour Shinjuku Apartment No. 4215 (42F)

Update Date : 2024/5/12 Next scheduled update date: Anytime

Layout(Type)	1LDK(M-80E)	Area	82.14㎡ (883.8264 sq. ft.)
Rent	¥ 608,000	Public maintenance fee Administration cost	included in rent
Deposit Key money	2 Months • None	Renewal fee	None
Transaction type (Year)	Periodic Tenancy Contract (3 Years)	Status	Move-in date negotiable (Being restored)
Note	•This property is only for residential purposes, except the SOHO		
Equipments	Please contact us if there is any question.		
Completed	January,2010		
Constructing	• Steel construction, steel framed reinforced concrete structure, reinforced concrete construction • 44 stories		
Location	6-15-1 Nishi-Shinjuku, Shinjuku-ku, Tokyo		
Trains	Nishi-Shinjuku Stn., Marunouchi Line (7-min. walk) Tochomae Stn., Oedo Line (5-min. walk) Shinjuku Stn., JR Line (13-min. walk)		



- Lease guarantee agreement: required (by a guarantee company designated by us)  
Guarantee fee: 30% of lease for the first year, 8,000 yen/year for the second and subsequent years  
Fees may vary depending on the guarantee company - contact us for more details.
- All rentals are on a first-come-first-served basis.
- Multi-risk home insurance is mandatory.
- Deposits equivalent to one month of rent are non-refundable at the end of the contract.
- If the contract is terminated in less than one year, a penalty equivalent to one-month rent will be applied.
- When disparities arise between the drawing and the actual construction, the actual construction takes precedence.

Sumitomo Realty & Development Co., Ltd.  
Shinjuku NS Building, 2-4-1, Nishi-Shinjuku Shinjuku-ku, Tokyo 163-0820 Japan  
Phone: +81-3-3346-9510

Phone: 0120-770-507  
for Real estate company: +81-3-3346-9510  
Please contact us if there is any question.