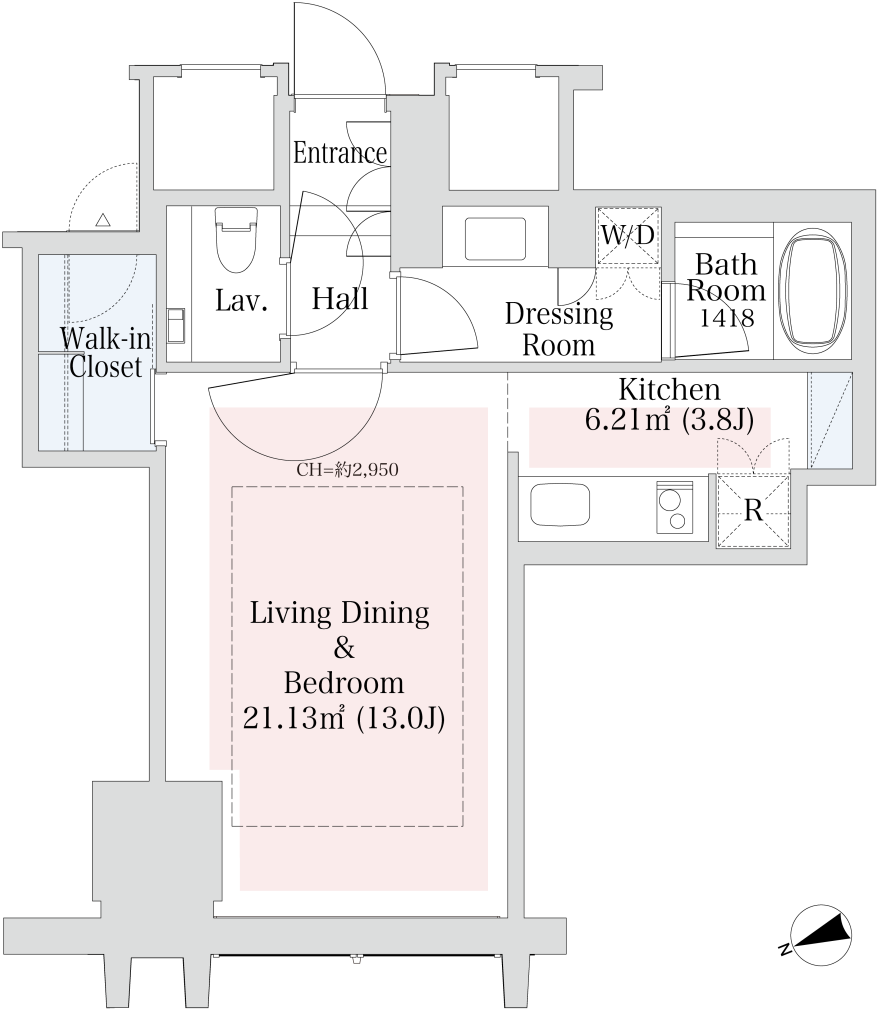


La Tour Shinjuku Grand Apartment No. 702 (7F)

Update Date : 2025/7/3 Next scheduled update date: Anytime

Layout(Type)	1K(40C)	Area	43.88㎡ (472.1488 sq. ft.)
Rent	¥ 280,000	Public maintenance fee Administration cost	included in rent
Deposit Key money	2 Months • None	Renewal fee	None
Transaction type (Year)	Periodic Tenancy Contract (2 Years)	Status	Move in possible now (After paperwork)
Note	<div>24-hour bilingual concierge; hotel-like amenities 1 month rent will be deducted at the time of move-out.</div> <div>•This property is only for residential purposes, except the SOHO</div>		
Equipments	Please contact us if there is any question.		
Completed	September,2011		
Constructing	• RC, SRC, Steel-Frame • Anti-sway structure • 40 Stories		
Location	8-17-2 Nishi-shinjuku, Shinjuku-ku, Tokyo		
Trains	<div>Nishi-Shinjuku Stn., Marunouchi Line (6-min. walk)</div> <div>Tochomae Stn., Oedo Line (10-min. walk)</div> <div>Shinjuku Stn., JR Line (15-min. walk)</div>		



- Lease guarantee agreement: required (by a guarantee company designated by us)
Guarantee fee: 30% of lease for the first year, 8,000 yen/year for the second and subsequent years
Fees may vary depending on the guarantee company - contact us for more details.
- All rentals are on a first-come-first-served basis.
- Multi-risk home insurance is mandatory.
- Deposits equivalent to one month of rent are non-refundable at the end of the contract.
- If the contract is terminated in less than one year, a penalty equivalent to one-month rent will be applied.
- When disparities arise between the drawing and the actual construction, the actual construction takes precedence.

Sumitomo Realty & Development Co., Ltd.
Shinjuku NS Building, 2-4-1, Nishi-Shinjuku Shinjuku-ku, Tokyo 163-0820 Japan
Phone: +81-3-3346-9510

Phone: 0120-770-507
for Real estate company: +81-3-3346-9510
Please contact us if there is any question.