

La Tour Shiodome Apartment No. 5502 (55F)

Update Date : 2025/5/2 Next scheduled update date: Anytime

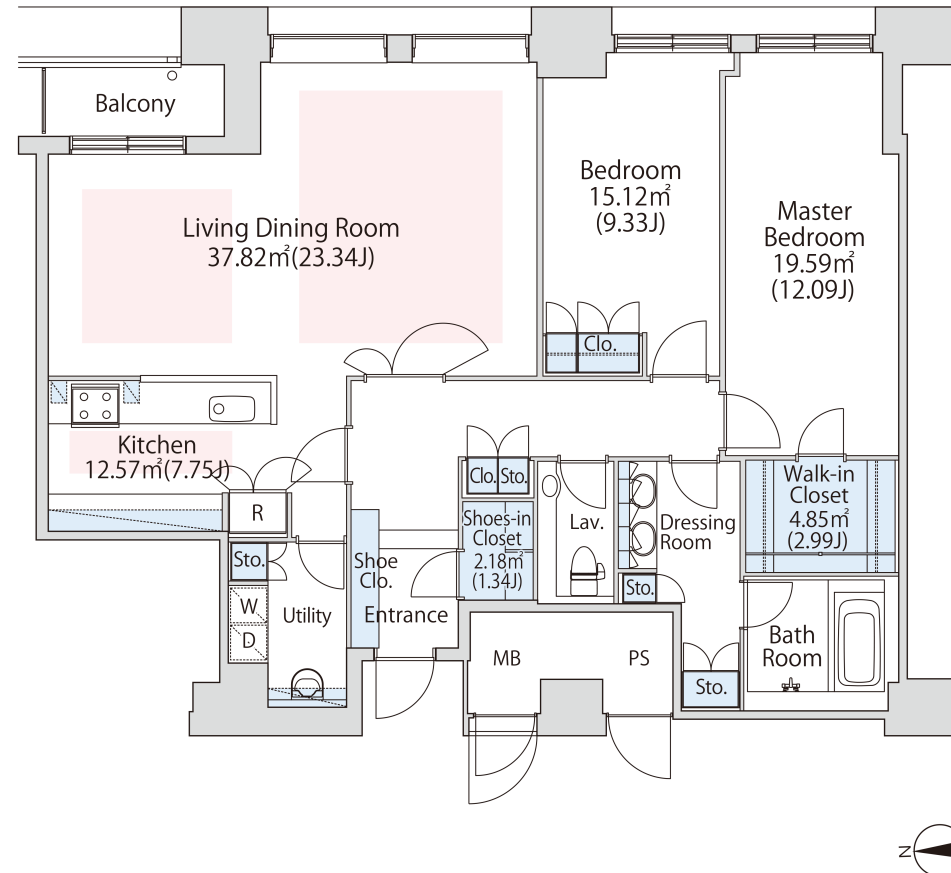
Layout(Type)	2LDK(M')	Area	130.34㎡ (1402.4584 sq. ft.)
Rent	¥ 1,200,000	Public maintenance fee Administration cost	included in rent
Deposit Key money	2 Months • None	Renewal fee	None
Transaction type (Year)	Periodic Tenancy Contract (3 Years)	Status	Move in possible now (After paperwork)
Note	Fitness room is available Instrument is negotiable Through elevator to the upper floors 1 month rent will be deducted at the time of move-out. •This property is only for residential purposes, except the SOHO		
Equipments	Please contact us if there is any question.		
Completed	February,2004		
Constructing	• Reinforced concrete • 56 stories		
Location	1-1-1 Kaigan, Minato-ku, Tokyo		
Trains	Hamamatsucho Stn., JR Line (4-min. w alk) Daimon Stn., Oedo/Asakusa Lines (4- min. walk) Shiodome Stn., Yurikamome Line (8-m in. walk)		



Campaign On



*If the promotion is applicable, cancellation in less than 13 months will incur a 1-month penalty fee.
If not, cancellation in less than 1 year will incur a 1-month penalty fee.



- Lease guarantee agreement: required (by a guarantee company designated by us)
Guarantee fee: 30% of lease for the first year, 8,000 yen/year for the second and subsequent years
Fees may vary depending on the guarantee company - contact us for more details.
- All rentals are on a first-come-first-served basis.
- Multi-risk home insurance is mandatory.
- Deposits equivalent to one month of rent are non-refundable at the end of the contract.
- If the contract is terminated in less than one year, a penalty equivalent to one-month rent will be applied.
- When disparities arise between the drawing and the actual construction, the actual construction takes precedence.

Sumitomo Realty & Development Co., Ltd.

Shinjuku NS Building, 2-4-1, Nishi-Shinjuku Shinjuku-ku, Tokyo 163-0820 Japan

Phone: +81-3-3346-9510

Phone: 0120-770-507

for Real estate company: +81-3-3346-9510

Please contact us if there is any question.