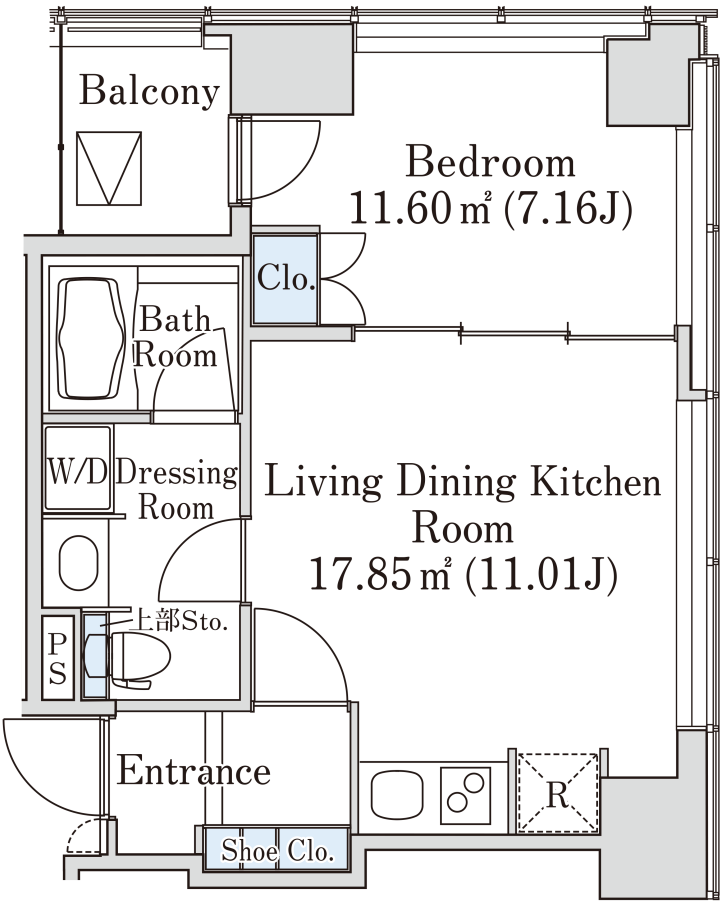
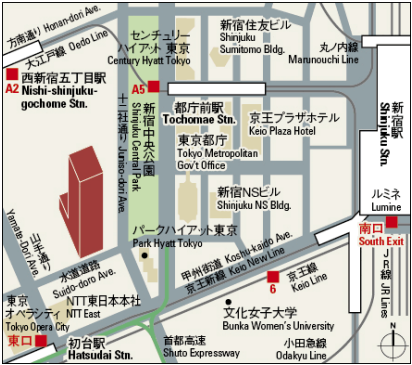


# Platine Shinjuku-Shintoshin      Apartment No. 801 (8F)

Update Date : 2024/5/2 Next scheduled update date: Anytime

Layout(Type)	1LDK(A)	Area	41.48㎡ (446.3248 sq. ft.)
Rent	¥ 227,000	Public maintenance fee Administration cost	¥ 15,000
Deposit Key money	2 Months • None	Renewal fee	None
Transaction type (Year)	Periodic Tenancy Contract (3 Years)	Status	Move-in date negotiable (Being restored)
Note	24-hour security management Pet is negotiable 1 month rent will be deducted at the time of move-out.  •This property is only for residential purposes, except the SOHO		
Equipments	Please contact us if there is any question.		
Completed	May,2008		
Constructing	• Steel-frame, reinforced concrete • Anti-earthquake structure • 27 stories		
Location	4-34-7 Nishi-Shinjuku, Shinjuku-ku, Tokyo		
Trains	Tochomae Stn., Oedo Line (9-min. walk) Hatsudai Stn., Keio Line (8-min. walk) Shinjuku Stn., Keio/JR Lines (15-min. walk) Shinjuku Stn.,Odakyu Line (14-min. walk) Nishi-Shinjuku-Gochome Stn., Oedo Line (10-min. walk)		



- Lease guarantee agreement: required (by a guarantee company designated by us)  
Guarantee fee: 30% of lease for the first year, 8,000 yen/year for the second and subsequent years  
Fees may vary depending on the guarantee company - contact us for more details.
- All rentals are on a first-come-first-served basis.
- Multi-risk home insurance is mandatory.
- Deposits equivalent to one month of rent are non-refundable at the end of the contract.
- If the contract is terminated in less than one year, a penalty equivalent to one-month rent will be applied.
- When disparities arise between the drawing and the actual construction, the actual construction takes precedence.

Sumitomo Realty & Development Co., Ltd.  
Shinjuku NS Building, 2-4-1, Nishi-Shinjuku Shinjuku-ku, Tokyo 163-0820 Japan  
Phone: +81-3-3346-9510

Phone: 0120-770-507  
for Real estate company: +81-3-3346-9510  
Please contact us if there is any question.